

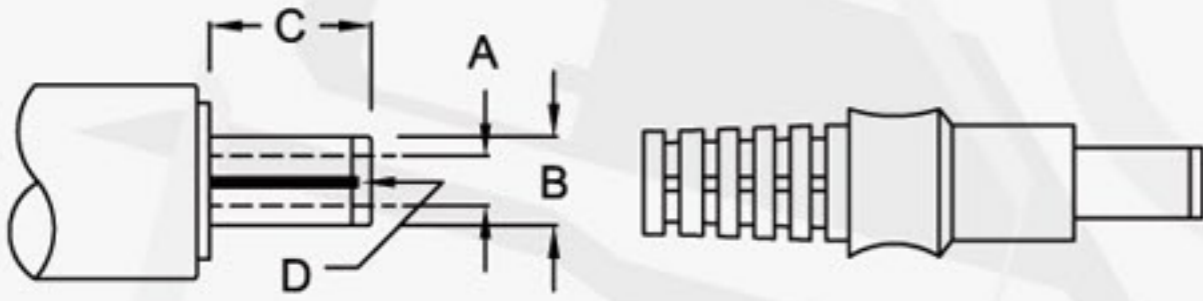
DC Connector Options

OC-01

DC POWER PLUG -180°

OC-01A : DC POWER PLUG-FORK TYPE

OC-01B : DC POWER PLUG-ROUND TYPE



AxBxC or AxBxDxC

A: 2.1/2.5

B: 5.0/5.5/6.3

C: 9~13.5

D: 1.0/1.35/1.7



FORK TYPE



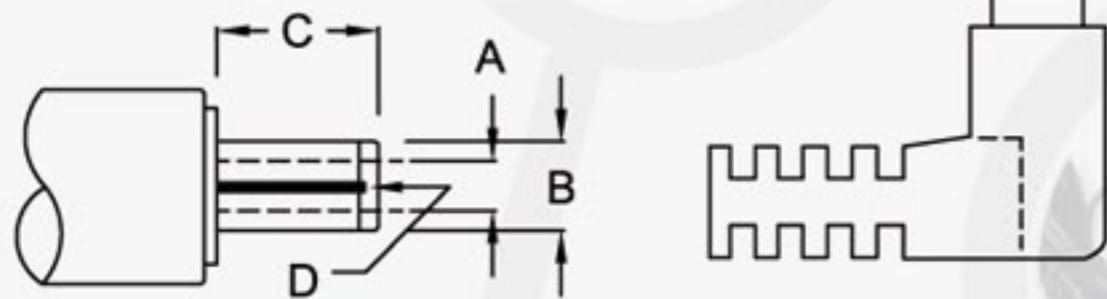
ROUND TYPE

OC-02

DC POWER PLUG -90°

OC-02A : DC POWER PLUG-FORK TYPE

OC-02B : DC POWER PLUG-ROUND TYPE



AxBxC or AxBxDxC

A: 2.1/2.5

B: 5.0/5.5/6.3

C: 9~13.5

D: 1.0/1.35/1.7



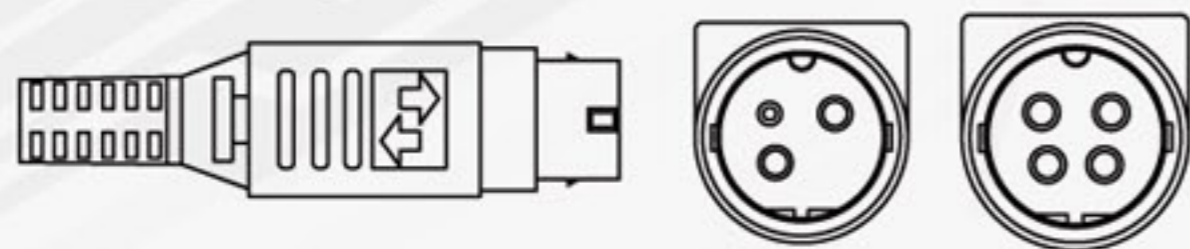
FORK TYPE



ROUND TYPE

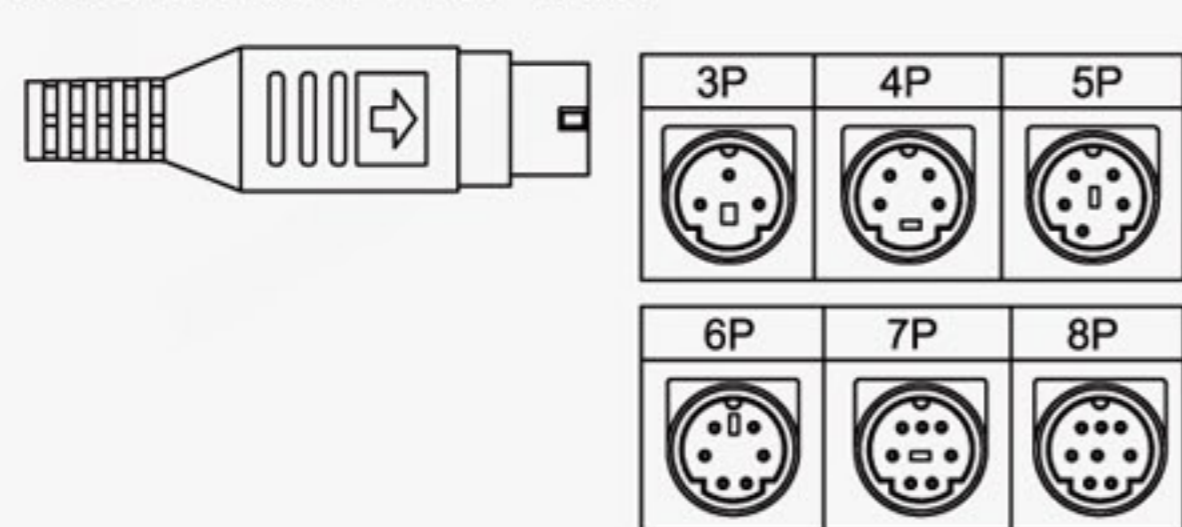
OC-03

POWER DIN : 3-PIN; 4-PIN



OC-04A

MINI DIN PLUG : 3-PIN~8-PIN



OC-04B

MINI DIN PLUG : 3-PIN~8-PIN 90°



OC-05A

DIN PLUG (180°) : 3-PIN~8-PIN

3PIN : 180°

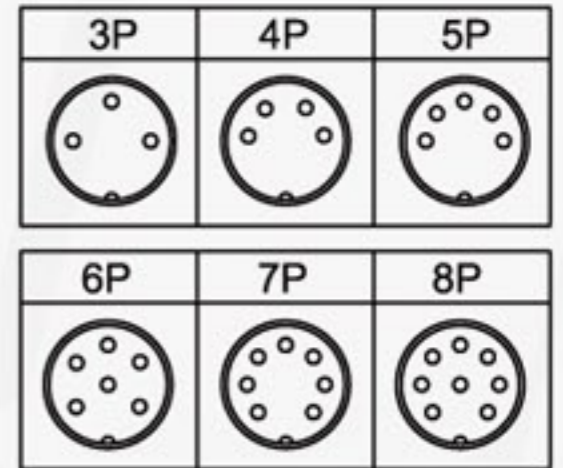
4PIN : 210°

5PIN : 180°/240°/360°

6PIN : 240°

7PIN : 270°

8PIN : 270°



OC-05B

DIN PLUG (90°) : 3-PIN~8-PIN

3PIN : 180°

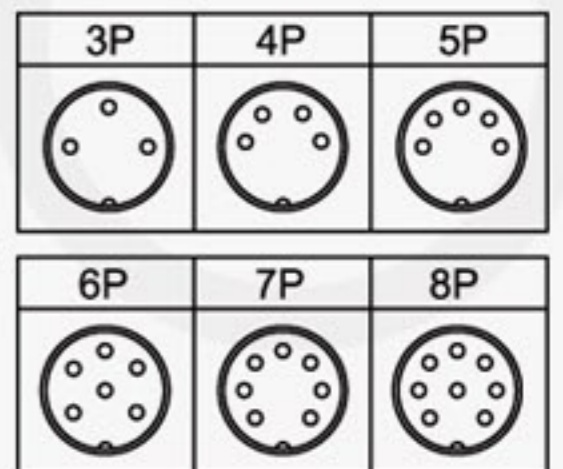
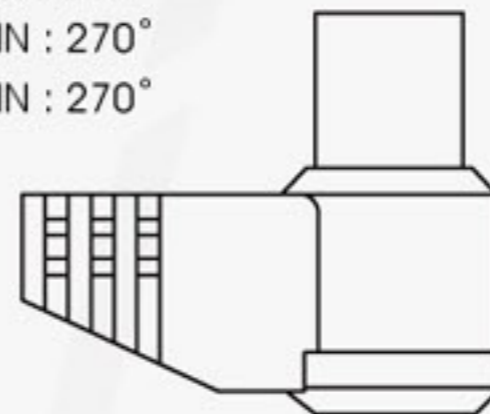
4PIN : 210°

5PIN : 180°/240°/360°

6PIN : 240°

7PIN : 270°

8PIN : 270°



OC-06

BNC CONNECTOR

